

# Speeding Event Rate Metric Resource Guide

Last edited on June 6, 2022

Intended Audience: Delivery Service Partners (DSPs) in the U.S.

## What is the metric?

**Speeding Event Rate:** It is critical that your Delivery Associates (DAs) travel within posted speed limits for their safety and the safety of the communities they serve. The Speeding Event Rate metric is the average number of speeding instances incurred by a DSP per 100 trips. A speeding instance is speeding 10 Miles per Hour (MPH) or more over the posted speed limit for roughly one city block. DSPs who earn 'Fantastic' for the Speeding Event Rate metric typically achieve less than 10 events per 100 trips for the week (e.g. less than one speeding event in every ten routes).

### IMPORTANT TO KNOW

Any instance of speeding is unacceptable and we've designed this metric to enable you to focus on coaching DAs with the riskiest speeding behaviors.

## Calculation Details

**Speeding Event Rate = Number of 'Scorecard Speeding Events' divided by the count of trips run for the week for all vehicles, multiplied by 100**

- A 'Speeding Event' occurs when a DA travels 10 MPH or more over the posted speed limit.
- Typically, an event will be triggered if a DA is speeding for more than one city block.
- We prioritize Netradyne as the data source for measuring speeding events, and if Netradyne isn't available, we use Geotab as a back-up. For example, if a DA has 6 speeding events from Netradyne on Day 1, 5 speeding events from Geotab on Day 2, and 4 speeding events from Netradyne on Day 3, the DA's weekly Speeding Event Rate score would be 5 events per trip (average of 6, 5, and 4). A DA can't have more than one signal source per day. Please see the [On-Road Safety Score Resource Guide](#) for details on how to determine which signal source contributed to a DA's Speeding Event Rate on any given day.
- The Speeding Event Rate metric only applies to branded vehicles and we record events by using GPS signals (from Geotab) and vision-based machine learning (from Netradyne).
- All DSP metrics are displayed as XX events per 100 trips to make them more easily interpretable. EXAMPLE: If a DSP's DAs executed 175 trips in a week and the DAs incurred 10 speeding incidents during those routes, then the DSP's Speeding Event Rate score is 6 events per 100 trips (10 events per 175 trips = 6 events per 100 trips).

## Tips for DSPs

- ✓ Ensure DAs adopt the mindset of a "Professional Driver", and that they must make a personal commitment to eliminate driving habits not in accordance with professional driver standards, before and during vehicle operation.
- ✓ Help DAs understand that safe vehicle operations protects them, the organization, and the community.
- ✓ Communicate "Tips for DAs" frequently to all DAs to remind them of specific actions they must take.
- ✓ Regularly review your Speeding Event Rate data on the [DSP Safety Dashboard](#).
- ✓ Monitor your On-Road Conduct and Safety (ORCAS) Program notifications/emails regarding speeding to ensure repeat events and behaviors are corrected through training prior to reaching critical thresholds.
- ✓ Proactively coach to mitigate areas of potential violation (i.e. Infrequent speed limit signs, drivers unfamiliar with route limits, etc.).

## Tips for DAs

- ✓ As a Professional Driver, you must make the personal commitment to eliminate driving habits not in accordance with professional driver standards, before and during vehicle operation. Safe behavior protects you, your family, and the community.
- ✓ There is no acceptable business reason to ever speed/violate posted speed limits.
- ✓ If you are unaware of the speed limit, proceed at a speed below what is normal for the type/location of road you are on, until you are able to confirm the posted speed limit.
- ✓ Anticipate and adjust in advance of speed reduction areas (work zones, on/off ramps, school zones, lane closures, etc.) and take precaution to not over-accelerate when passing, traveling on on-ramp, changing speed limit zones, etc.

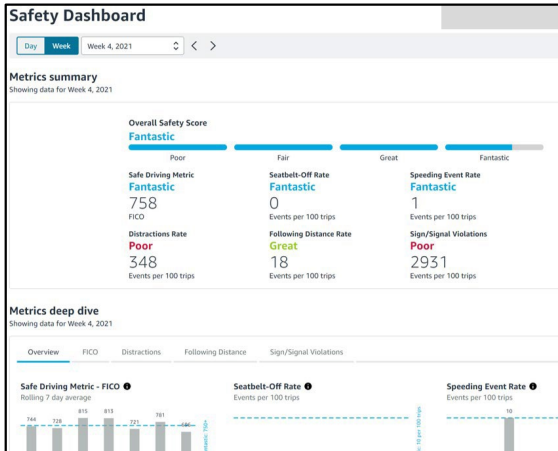
### IMPORTANT TO KNOW

In addition to the Speeding Event Rate metric, DAs exceeding the speed limit can be issued Tier 2/3 Defects. Defects can ultimately lead to a DA's offboarding via the DA Focus Program, and excessive speeding can also ultimately lead to offboarding through the On Road Conduct and Safety (ORCAS) process.



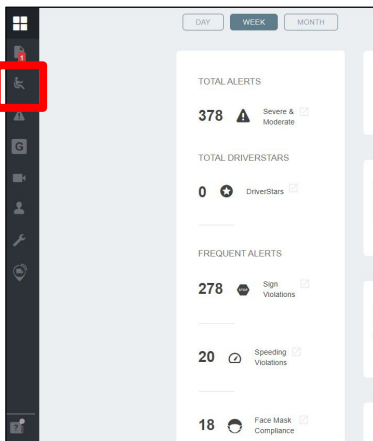
# Deep Diving Speeding Event Rate (Netradyne)

DSPs can use the DSP Safety Dashboard [here](#) to see metric trends, including viewing DSP metric trends, deep diving DSP metrics and drilling down into individual DA performance for coaching. You can identify DAs for recognition or coaching either using the DSP Scorecard or DSP Safety Dashboard. See screenshots below.

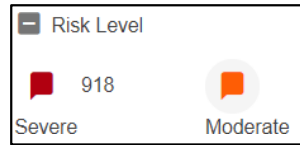


Delivery Associate	On-Road Safety Score	Seattbelt-Off Rate (per trip)	Speeding Event Rate (per trip)	Distractions Rate (per trip)	Sign/Signal Violations Rate (per trip)	Following Distance Rate (per trip)
De... AVB3IH7DOY6L3	Fair	2.5 ↑ 1.5	1.0 ↑ 0.8	0.0 -- 0.0	11.5 2.3	0.0 -- 0.0
Tia... AZHOZ7GGHOZ95B	Fair	0.0 -- 0.0	0.0 -- 0.0	0.5 ↑ 0.5	12.5 1.3	0.0 -- 0.0
Fra... AZE7ZB5XKKRMEK	Fair	0.0 -- 0.0	1.7 ↑ 1.3	0.0 -- 0.0	7.7 ↑ 4.3	0.7 ↑ 0.7
Al...	Great	No Data	No Data	No Data	No Data	No Data

You can use the Netradyne Portal located at [www.netradyne.com](http://www.netradyne.com) to view events by DA and video evidence for coaching. There, you can deep dive which DAs have the most Speeding Events, using the events located with the 'speeding' icon. See below for an example of how to deep dive. You can view more materials as part of your Netradyne onboarding.



1. In the Netradyne portal, click on the Driver view icon on the left side of the dashboard (highlighted in red)



2. We only use 'Severe' events for scoring – click on Risk Level 'Severe' on the right side of your screen so a number appears next to Severe

DriverStar	Advisory	Sign/Signal Violations	Harsh Handling	Speeding
1	10	12	642	12
11	0	0	0	0
12	0	0	0	0
13	0	0	0	0
14	0	0	0	0
15	0	0	0	0
16	0	0	0	0
17	0	0	0	0
18	0	0	0	0
19	0	0	0	0
20	0	0	0	0
21	0	0	0	0
22	0	0	0	0
23	0	0	0	0
24	0	0	0	0
25	0	0	0	0

3. Scroll to the right until you see the 'speeding' icon, which indicates Speeding Events

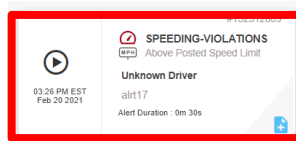


4. Click on the icon to sort by DAs with the most events of that type

## How do I see details of individual events?

You can see individual events several ways, and one of these is by drilling into the individual DA's data to see events associated with that DA.

1. Click on the row of the DA whose data you want to deep dive



2. Click on the event to view



3. View the event with Netradyne Camera video footage



# Deep Diving Speeding Event Rate (Geotab/Mentor)

You can see branded vehicle speeding events by DA both daily and weekly in the Mentor DSP Portal (located at [https://portal.edriving.com/#!/login\\_fleet\\_amzl](https://portal.edriving.com/#!/login_fleet_amzl)). The number of speeding events is listed under the heading 'SSE.' which stands for Scorecard Speeding Events.

DRIVER NAME	STATION	TRIPS	MILES	TIME	FICD								SSE	MPG
		2	24 4	14:46	58 7	1	3	0	14	0	0	64	30	3
		4	63 8	36:00	707	2	2	3	7	0	10	72	22	3

## How can I deep dive specific events for coaching?

You can see specific events for branded vehicles in the Xcelerate portal (located at [xcelerate.elementfleet.com](https://xcelerate.elementfleet.com)), where you can see time, location, speed at time of event, and the speed limit at time of event. Below are screen shots for how to access this. See Page 4 for instructions on how LeasePlan DSPs can access Geotab data.

**Logging In**  
To access myGEOTAB please use your desired web browser and navigate to [Xcelerate](#) > [Vehicles](#) > [Telematics](#) > [Geotab](#)

**To locate speeding events,** navigate to **Exceptions** in the main menu on the left.

**To run a report,** select the following options:

1. Select **Date Range**
2. Select **View by Vehicle**
3. Select **vehicles** - select all vehicles or pick specific vehicles
4. Select **'Scorecard Speeding Event 1'** in the Rules
5. Select **Apply changes**

**To see trip/location details** click on any event or the waypoint icon to open trips detail history and mapping.

**Exceptions** [Show Help](#)

**eDriving Scorecard Speeding Event 1**

UNASSIGNED, UNASSIGNED, (19024376) 11m 20s 15 mi 13

06/15/20:  
 10:43:48 am 33s 1 mi 7630 Oakdale Ave, Hammond, IN 46324, USA 75 mph > 55 mph  
 10:46:08 am 22s 0 mi 2505 Bernice Rd, Lansing, IL 60438, USA 72 mph > 55 mph

**Mon Jun 15 UNASSIGNED, UNASSIGNED, (19024376)**  
 Total stop duration 8m 35s Total idling duration 8m 35s  
 Total driving duration 37m 41s Total Distance 33mi

2100 E 15th Ave, Gary, IN 46402, USA Stopped 10:00 am - 10:29 am Stop duration 28m 51s Idling 2s

Driving 10:29 am to 11:06 am Driving duration 37m 41s Distance 33mi

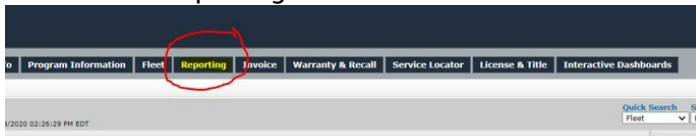
11021 S California Ave, Chicago, IL 60655, USA Stopped 11:06 am - 11:15 am Stop duration 8m 35s Idling 8m 35s



# How can I deep dive specific events for coaching as a LeasePlan DSP?

You can see specific events for branded vehicles in the LeasePlan ePlan portal, where you can see time, location, speed at time of event, and the speed limit at time of event. Below are screen shots for how to access this.

1. Click on the Reporting button in the ePlan Portal

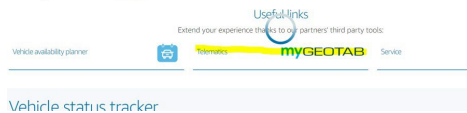


2. Click myFleet reports



3. Click myGeotab

Ready to manage your fleet?



4. Follow the instructions on Page 3



# FAQs

<p><b>Once I have Netradyne installed, will the Speeding Event Rate metric ever be based off of Geotab?</b></p>	<p>Yes. Once Netradyne begins impacting a DSP's Scorecard, for DAs that operate vehicles that do not have Netradyne available, the Speeding Event Rate metric will be based off of the next best safety signal available, Geotab.</p>
<p><b>How is the weekly DA Speeding Event Rate metric calculated if a DA operates both Netradyne-equipped vehicles and vehicles without Netradyne?</b></p>	<p>We use Geotab signals to inform the Speeding Event Rate if Netradyne signals are not available for a DA's daily trip. For example, if a DA works two days and has 3 speeding events in a vehicle with Netradyne installed on day one, but drives a vehicle without Netradyne signals the next day and incurs 5 speeding events according to Geotab, the DA's weekly Speeding Event Rate score would be 4 events per trip (the average of 3 and 5 = 4). This approach maximizes safety signal coverage for DSPs who have mixed fleets of vehicles with and without Netradyne.</p> <p>Netradyne signals will continue to take precedence when available, and no DA will have more than one signal type informing these safe driving metrics on a given day.</p>
<p><b>How do I know which source (Netradyne or Geotab) was used for my DAs' Speeding Event Rate metric?</b></p>	<p>You can use the <a href="#">DSP Safety Dashboard</a> to identify the data source that contributed to each DA's score each day. Please reference the <a href="#">On-Road Safety Score Resource Guide</a> for instructions on identifying which source contributed to any DA's score on any given day.</p>
<p><b>How do I deep dive what is driving my Speeding Event Rate score?</b></p>	<p>To find the DAs who are most impacting your Speeding Event Rate score, you can access the <a href="#">DSP Safety Dashboard</a> in the Performance Portal</p>
<p><b>What's the difference between eDriving/Geotab Speeding Events and Netradyne Speeding Events?</b></p>	<p>While Geotab-based speeding events are detected with GPS and third party maps data, Netradyne also uses machine vision to detect road signs and other information to ensure accuracy and improve coverage.</p>
<p><b>Why is my number of speeding events different in Netradyne versus eDriving/Geotab?</b></p>	<p>DSPs with Netradyne installed will experience all the benefits of vision based Machine Learning metrics. Netradyne uses both GPS and machine vision from the mounted camera to enhance detection of speeding events, which means counts of speeding events may differ from Geotab technology.</p>
<p><b>Why do the number of videos in the Netradyne portal not match the number of events reported for the Scorecard?</b></p>	<p>To improve data processing speed, not every event captured by a Netradyne device will have a corresponding video in the Netradyne portal, so the total number of videos will not always match the count of events for your DAs.</p>
<p><b>Does the Speeding Event Rate metric apply to both branded and non-branded vehicles?</b></p>	<p>The Speeding Event Rate metric only applies to branded vehicles, since only branded vehicles have Netradyne or Geotab devices installed.</p>